

# Brand Guidelines





# Table of Contents

<b>Brand Guidelines</b>	<b>1</b>
Introduction	2
Table of Contents	3
<b>Logo</b>	<b>4</b>
Logo / Elements	5
Logo Variation / Acceptable / Horizontal	6
Logo Variation / Acceptable / Stacked	7
Logo Variation / Acceptable / Indicia	8
Logo Variation / Acceptable / Icons	9
Logo / Unacceptable	10
Logo / Clear Space	11
Logo / Berkeley Lab Branded	12
<b>Color</b>	<b>13</b>
Using Color	14
<b>Typography</b>	<b>15</b>
Typography	16
<b>Templates</b>	<b>17</b>
Microsoft PowerPoint / Presentations	18
Microsoft PowerPoint / Presentations	19
Microsoft PowerPoint / Horizontal Posters	20
Microsoft PowerPoint / Vertical Posters	21
Microsoft PowerPoint / Specifications	22
Microsoft Word / Memos and Letterhead	23
Microsoft Word / Specifications	24
Business Card / Specifications	25
<b>Contact</b>	<b>26</b>

Logo



# Logo / Elements

The **JGI Logo** is the combination of four separate elements: The **initialism** and the **icon** (which constitute the **indicia**), next to the **logotype** and the **DOE tag**. The full-color logo shown below is the primary and preferred visual identification.



# Logo Variation / Acceptable / Horizontal



Horizontal CMYK  
**Preferred** / Use this preferred logo whenever possible



Horizontal 1-Color Black



Horizontal 1-Color Grayscale



Horizontal 1-Color White  
(for use on dark backgrounds)

# Logo Variation / Acceptable / Stacked



Stacked CMYK with and without DOE tag



Stacked 1-Color Black with and without DOE tag



Stacked 1-Color Grayscale with and without DOE tag



Stacked 1-Color White with and without DOE tag  
(for use on dark backgrounds)

## Logo Variation / Acceptable / Indicia



1-Color Black



1-Color White  
(for use on dark backgrounds)



## Logo Variation / Acceptable / Icons



CMYK



1-Color Black



1-Color Grayscale



1-Color White  
(for use on dark  
backgrounds)

## Logo / Unacceptable



DO NOT resize the icon



DO NOT reposition the icon



DO NOT replace colors



DO NOT use the logo against a background with insufficient contrast or conflicting color

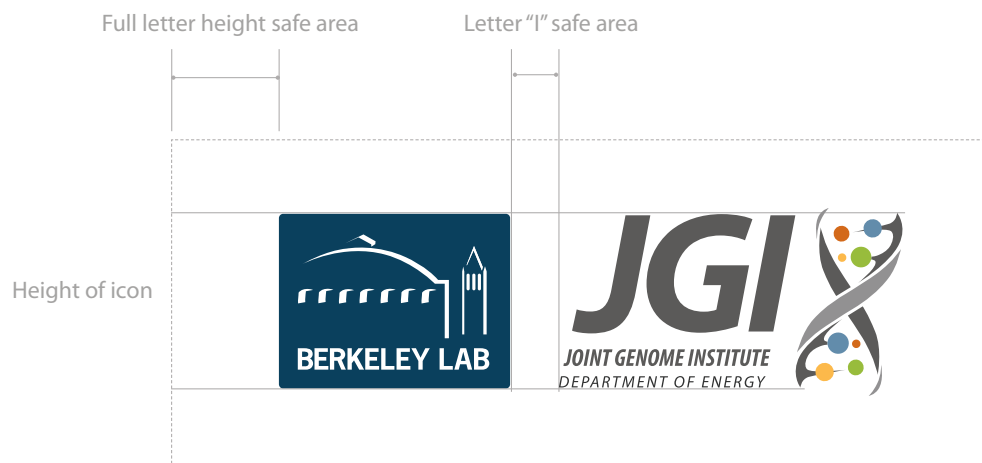
## Logo / Clear Space

The JGI LOGO requires a safe area of approximately one full-letter height around all text edges, on all four sides. This safe area protects the logo from clutter, impingement and brand confusion when used in conjunction with other graphic elements.



## Logo / Berkeley Lab Branded

When the JGI LOGO and Berkeley Lab logo are used together, the Lab logo is placed first. Lab logo height equals the height of the icon. Clearance equals the width of the italic letter “/”.



Color



## Using Color

An official color palette was developed to represent our brand. The colors chosen reflect the dynamism and excitement of the Molecular Foundry. In order to maintain consistency, it's important to use only the approved colors as outlined below.



CMYK  
70 / 63 / 62 / 58

RGB  
52 / 52 / 52

PMS  
Black

CMYK  
62 / 55 / 54 / 28

RGB  
90 / 90 / 90

PMS  
Cool Gray 11C

CMYK  
46 / 38 / 38 / 2

RGB  
145 / 144 / 144

PMS  
Cool Gray 8C

CMYK  
0 / 65 / 100 / 15

RGB  
211 / 105 / 27

PMS  
173C

CMYK  
50 / 20 / 5 / 25

RGB  
100 / 140 / 170

PMS  
652C

CMYK  
46 / 8 / 100 / 0

RGB  
153 / 189 / 60

PMS  
397C

CMYK  
0 / 30 / 80 / 0

RGB  
253 / 186 / 77

PMS  
143C

For PowerPoint use darker blue and green.



CMYK  
58 / 17 / 0 / 46

RGB  
59 / 110 / 143

PMS  
5405C

CMYK  
45 / 0 / 80 / 35

RGB  
96 / 154 / 62

PMS  
7490C

Typography



# Typography

There are two approved font families in the JGI typography system: Myriad Pro and Trade Gothic Condensed. These two font families were chosen to complement the identity and help convey the character of the brand. It's important to use them as outlined to maintain consistency within layouts.

## Myriad Pro

light  
*light italic*  
 regular  
*italic*  
 semibold  
*semibold italic*  
**bold**  
*bold italic*  
**black**  
 black italic

ABCDEFGHIJKLMN  
 OPQRSTUVWXYZ

abcdefghijklmn  
 opqrstuvwxyz

12345678910

## Trade Gothic Condensed

no. 18  
*no. 18 oblique*  
**bold no. 20**  
*bold no. 20 oblique*

ABCDEFGHIJKLMN  
 OPQRSTUVWXYZ

abcdefghijklmn  
 opqrstuvwxyz

12345678910

## Arial

For Microsoft PowerPoint and Word.

regular  
*italic*  
**bold**  
*bold italic*

ABCDEFGHIJKLMN  
 OPQRSTUVWXYZ

abcdefghijklmn  
 opqrstuvwxyz

12345678910



Templates



# Microsoft PowerPoint / Presentations

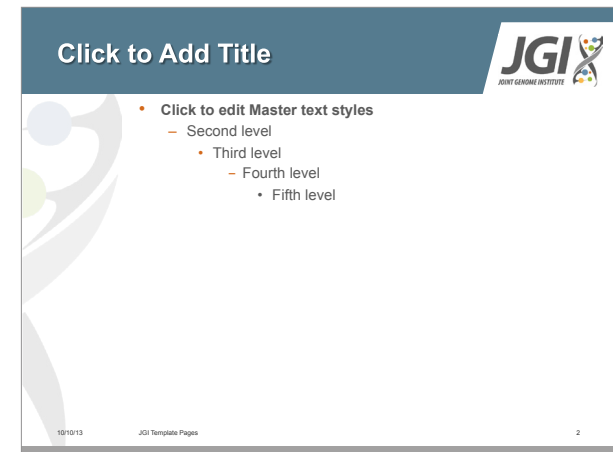
JGI Template. Size 10"x7.5".



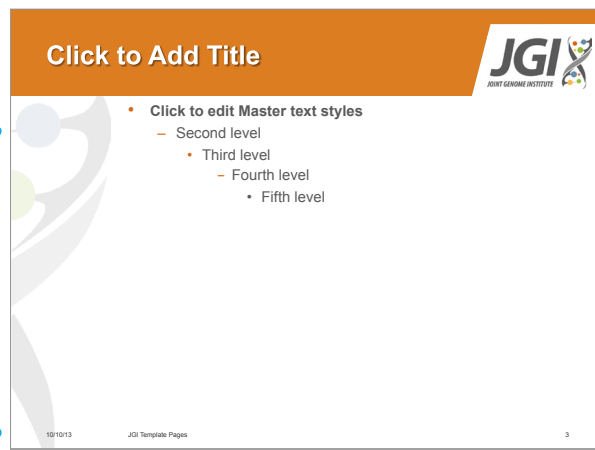
**Arial, 32 pt. Bold, White, Shadow**

**Arial, 20 pt. White, Shadow**

JGI\_Template.pptx: Title Page



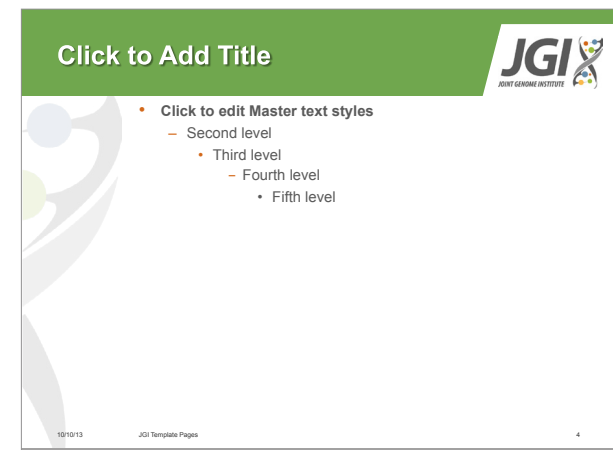
JGI\_Template.pptx: Blue Content Page



**Arial, 18 pt. Gray, R90/G90/B90 with Orange Bullets**

**Arial, 8 pt. Black, R52/G52/B52**

JGI\_Template.pptx: Orange Content Page



JGI\_Template.pptx: Green Content Page

# Microsoft PowerPoint / Presentations

JGI Science Template. Size 10"x7.5".



Arial, 32 pt. Bold, White, Shadow

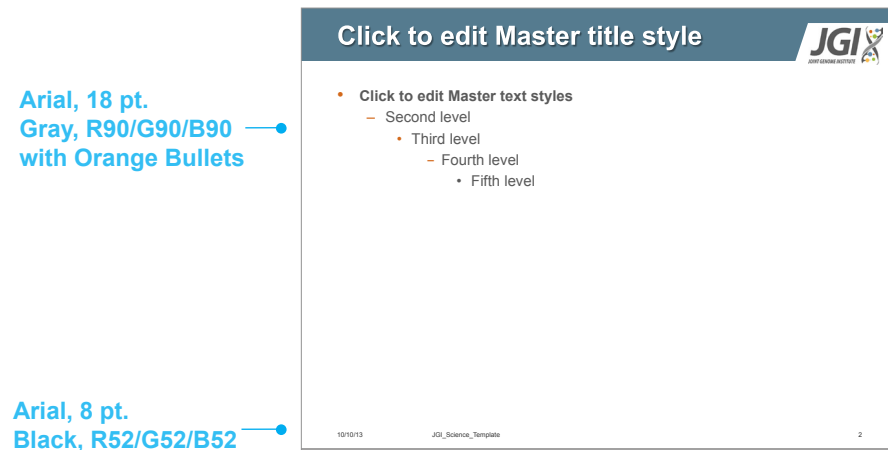
Arial, 20 pt. White, Shadow

JGI\_Science\_Template.pptx: Title Page

JGI/Berkeley Lab Template. Size 10"x7.5".



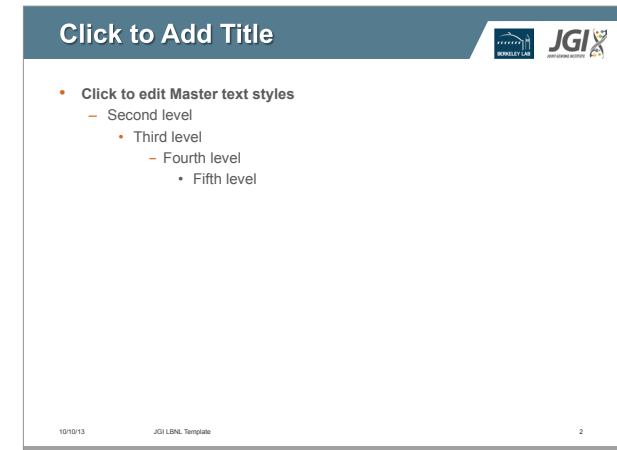
JGI\_LBNL\_Template.pptx: Title Page



Arial, 18 pt. Gray, R90/G90/B90 with Orange Bullets

Arial, 8 pt. Black, R52/G52/B52

JGI\_Science\_Template.pptx: Content Page



JGI\_LBNL\_Template.pptx: Content Page

# Microsoft PowerPoint / Horizontal Posters

JGI Horizontal Poster Templates: Sizes 42"x36" and 48"x36".

- Arial, 88 pt. Bold, White
- Arial, 72 pt. White
- Arial, 54 pt. White
- Arial, 32 pt. Bold, White
- Arial, 24 pt. Black
- R52/G52/B52

Click here to add the poster title  
Click here to add authors  
Click here to add authors

<b>INTRODUCTION, ABSTRACT</b> Type in or paste your text here	<b>MATERIALS &amp; METHODS</b> Type in or paste your text here	<b>RESULTS</b> Type in or paste your text here	<b>CONCLUSIONS</b> Type in or paste your text here
<b>OBJECTIVES</b> Type in or paste your text here			<b>REFERENCES</b> Type in or paste your text here
			<b>ACKNOWLEDGEMENTS or CONTACT</b> Type in or paste your text here

The work conducted by the U.S. Department of Energy Joint Genome Institute is supported by the Office of Science of the U.S. Department of Energy under Contract No. DE-AC02-05CH11221.

4 Column Layout

<b>CONCLUSIONS</b> Type in or paste your text here	<b>REFERENCES</b> Type in or paste your text here	<b>ACKNOWLEDGEMENTS or CONTACT</b> Type in or paste your text here
---	--	---

The work conducted by the U.S. Department of Energy Joint Genome Institute is supported by the Office of Science of the U.S. Department of Energy under Contract No. DE-AC02-05CH11221.

3 Column Layout

<b>CONCLUSIONS</b> Type in or paste your text here	<b>REFERENCES</b> Type in or paste your text here	<b>ACKNOWLEDGEMENTS</b> Type in or paste your text here
---	--	--

The work conducted by the U.S. Department of Energy Joint Genome Institute is supported by the Office of Science of the U.S. Department of Energy under Contract No. DE-AC02-05CH11221.

Wide Center Layout

<b>REFERENCES</b> Type in or paste your text here	<b>REFERENCES</b> Type in or paste your text here	<b>ACKNOWLEDGEMENTS or CONTACT</b> Type in or paste your text here
--	--	---

The work conducted by the U.S. Department of Energy Joint Genome Institute is supported by the Office of Science of the U.S. Department of Energy under Contract No. DE-AC02-05CH11221.

Right Highlight Layout

All poster layouts have 1" border clearance for framing.  
Size 42"x36" prints on standard plotter printer paper.

# Microsoft PowerPoint / Vertical Posters

JGI Vertical Poster Templates: Sizes 36"x42" and 36"x48".

- Arial, 88 pt. Bold, White
- Arial, 72 pt. White
- Arial, 54 pt. White
- Arial, 32 pt. Bold, White
- Arial, 24 pt. Black
- R52/G52/B52

The image displays four vertical poster templates for the Joint Genome Institute (JGI). Each template features a dark blue header with the JGI logo and a footer with a disclaimer: "The work conducted by the U.S. Department of Energy Joint Genome Institute is supported by the Office of Science of the U.S. Department of Energy under Contract No. DE-AC02-05OR21400." The templates are:

- 4 Column Layout:** Features a header with "Click here to add the poster title" and "Click here to add authors". The main content area is divided into four columns: INTRODUCTION, MATERIALS AND METHODS, RESULTS, and CONCLUSIONS. Below the first column is an OBJECTIVES section, and below the last column is an ACKNOWLEDGEMENTS section.
- 3 Column Layout:** Features a header with "Poster title" and the JGI logo. The main content area is divided into three columns: INTRODUCTION, CONCLUSIONS, and REFERENCES. Below the last column is an ACKNOWLEDGEMENTS section.
- Wide Center Layout:** Features a header with "Poster title" and the JGI logo. The main content area is divided into three columns: CONCLUSIONS, REFERENCES, and ACKNOWLEDGEMENTS.
- Right Highlight Layout:** Features a header with "Poster title" and the JGI logo. The main content area is divided into four columns: METHODS, REFERENCES, ACKNOWLEDGEMENTS, and CONCLUSIONS.

Arial, 24 pt. Bold, White

All poster layouts have 1" border clearance for framing  
 Size 42"x36" prints on standard plotter printer paper

## Microsoft PowerPoint / Specifications

Color, text, information graphics and photography are tools to help make your point, not detract from it. Effects such as 3-D, gradients and unnecessary shadows add clutter, not visual interest. White space serves an important function by creating visual breathing room and focusing the viewer on your content.

Arial is a universally-available font. It is used in place of JGI's official fonts, Myriad Pro and Trade Gothic Condensed, in PowerPoint projects.

### Presentations

OPENING SLIDE TITLE: 32 pt. Bold, White, with Shadow.

OPENING SLIDE SUBTITLE: 20 pt. White, with Shadow.

SLIDE TITLE: 32 pt. Bold, White with Shadow.

SUBSUBTITLE: 20 pt. Gray R90 / G90 / B90.

TEXT AND BULLETS: 18 pt. Gray R90 / G90 / B90, with Orange Bullets.

FOOTER: 8 pt. Black.

### Posters

SLIDE TITLE: 88 pt. Bold, White.

SLIDE SUBTITLE 1: 72 pt. White.

SLIDE SUBTITLE 2: 54 pt. White.

HEADINGS: 32 pt. Bold, White.

TEXT AND BULLETS: 24 pt. Black, with Black Bullets.

FOOTER: 24 pt. Bold, White.

# Microsoft Word / Memos and Letterhead

Microsoft Word Templates. Size 8.5"x11".

Phone: 925/ 296-xxxx  
Fax: 925/ 296-xxxx  
Email: xxx @lbl.gov

**JGI** JOINT GENOME INSTITUTE  
UNITED STATES DEPARTMENT OF ENERGY

**MEMO**

**TO:**

**FROM:**

**DATE:** October 1, 201

**RE:**

Text

Phone: 925/ 296-xxxx  
Fax: 925/ 296-xxxx  
Email: xxx @lbl.gov

**JGI** JOINT GENOME INSTITUTE  
UNITED STATES DEPARTMENT OF ENERGY

**MEMO**

**TO:**

**FROM:**

**DATE:** October 9, 2013

**RE:**

Text

2800 Mitchell Drive, Walnut Creek, CA 94598  
www.jgi.doe.gov

2800 Mitchell Drive, Walnut Creek, CA 94598  
www.jgi.doe.gov

Annotations: Arial, 10 pt. White; Arial, 22 pt. Bold, Blue; Arial, 11 pt.; Arial, 11 pt.; Lines .75 pt. Gray R90 / G90 / B90; Arial, 10 pt. Bold, Blue

JGI Memo

JGI/Berkeley Lab Memo

**JGI** JOINT GENOME INSTITUTE  
UNITED STATES DEPARTMENT OF ENERGY

2800 Mitchell Drive, Walnut Creek, CA 94598  
www.jgi.doe.gov

JGI/Berkeley Lab Letterhead

## Microsoft Word / Specifications

Arial is a universally-available font. It is used in place of JGI's official fonts, Myriad Pro and Trade Gothic Condensed, in MicroSoft Word memos and letterheads.

### Memos

HEADER GRAPHIC: W8" x H1.35".

JGI HEADER: 10 pt. White.

JGI MEMO: 22 pt. Bold, Blue.

JGI TEXT: 11 pt. Black.

JGI FOOTER: 10 pt. Bold, Blue R100 / G140 / B170.

LINES: .75 pt. Gray R90 / G90 / B90.

### Letterhead

HEADER GRAPHIC: W8" x H1.35".

JGI TEXT: 11 pt. Black.

JGI FOOTER: 10 pt. Bold, Blue R100 / G140 / B170.

LINES: .75 pt. Gray R90 / G90 / B90.



# Business Card / Specifications

Adobe InDesign Template. Size 3.5"x2".

Trade Gothic Bold, 10 pt.      Trade Gothic Condensed No. 18, 10 pt.

1 line space

Trade Gothic Condensed No. 18, 10 pt.  
1.2 line spacing

**JGI** **JOINT GENOME INSTITUTE**  
UNITED STATES DEPARTMENT OF ENERGY

**Edward M. Rubin, M.D., PhD. | Director**

1 Cyclotron Road | Mail Stop 84R0171  
Berkeley, CA 94720  
EMRubin@lbl.gov | www.jgi.doe.gov  
T: 510.486.5072 | C: 925.296.5650  
F: 510.486.4229

BERKELEY LAB

JGI/Berkeley Lab Business Card — Front

JGI LOGO: W2.6492" x H.4471"  
BERKELEY LAB LOGO: W.5916" x H.4471"  
TEXT COLOR: Black 80%

.25 .125 .125

.25

.25

**JGI** **JOINT GENOME INSTITUTE**  
UNITED STATES DEPARTMENT OF ENERGY

**David E. Gilbert | Public Affairs Manager**

2800 Mitchell Drive | Walnut Creek, CA 94598  
degilbert@lbl.gov | www.jgi.doe.gov  
T: 925.296.5643 | C: 925.296.5643  
F: 925.296.5643

JGI General Business Card — Front



JGI Business Card — Back

# Contact

For assistance or additional information:

**David Gilbert**, [degilbert@lbl.gov](mailto:degilbert@lbl.gov)

