

Transcriptional Interactome in Mouse Genome

Yubo ZHANG^{1,2}, Guoliang LI¹, Han XU¹, Fabianus Hendriyan MULAWADI¹, Ken SUNG Wing Kin¹, Xiao'an Ruan¹, Yijun Ruan¹ and Chia-Lin WEI^{1,2}

¹ Genome Institute of Singapore, 60 Biopolis Street, Genome #02-01, Singapore 138672

² U.S. Department of Energy Joint Genome Institute, 2800 Mitchell Drive, CA 94598

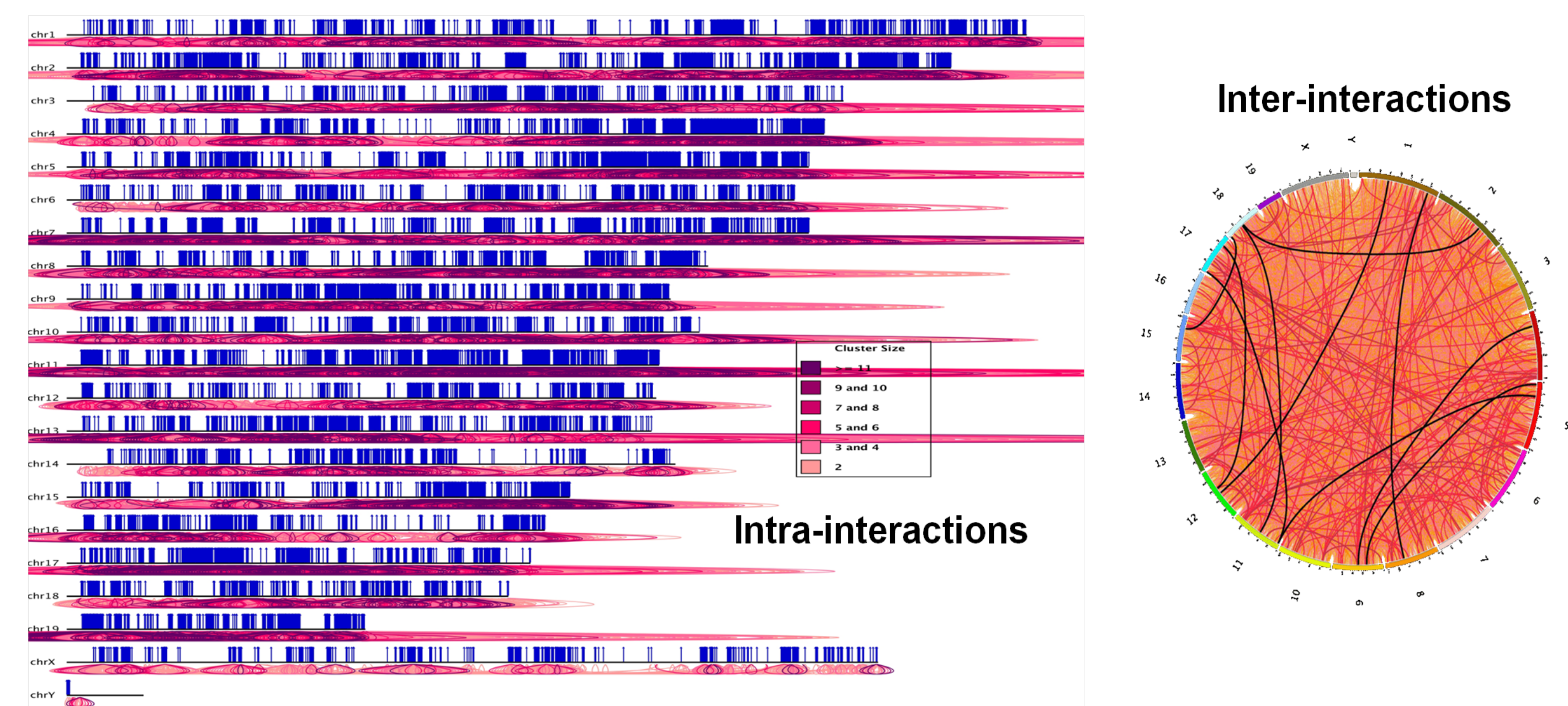
The work conducted by the DOE Joint Genome Institute is supported by the Office of Science of the U.S. Department of Energy under Contract No. DE-AC02-05CH11231

LBNL-5717E-Poster

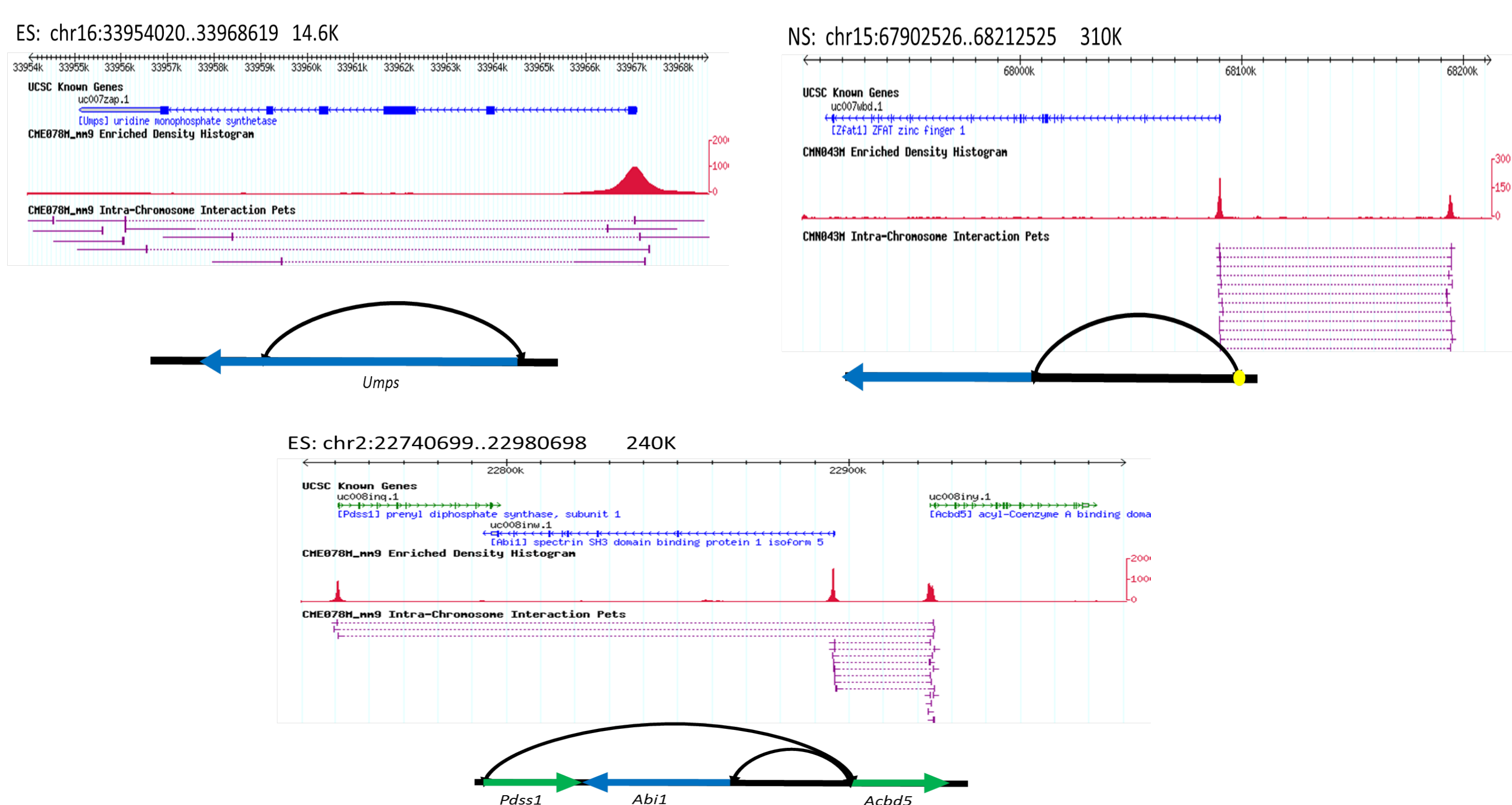
Abstract

Distant regulatory elements have been shown to influence gene function *via* long-range chromatin interactions. In this study, we depict the dynamic transcriptional interactomes mediated by RNA polymerase II (RNAPII) with the newly developed Chromatin Interaction Analysis by Pair End diTag (ChIA-PET) to define the chromatin organizations pertinent to transcription regulation and epigenetic control in pluripotent embryonic stem cells (mES), neural stem cells (mNS) and neurosphere cells (mNP). With over 150 million ChIA-PET sequencing, thousands of *cis*- and *trans*- chromatin interactions tethered by RNAPII are defined. We plan to integrate the transcription interactome maps with global transcription expression changes, promoter activities, gene activities and major epigenomic features to define spatial distribution and temporal regulation of transcription networks.

3. Overview of the mES Interactome across Genome

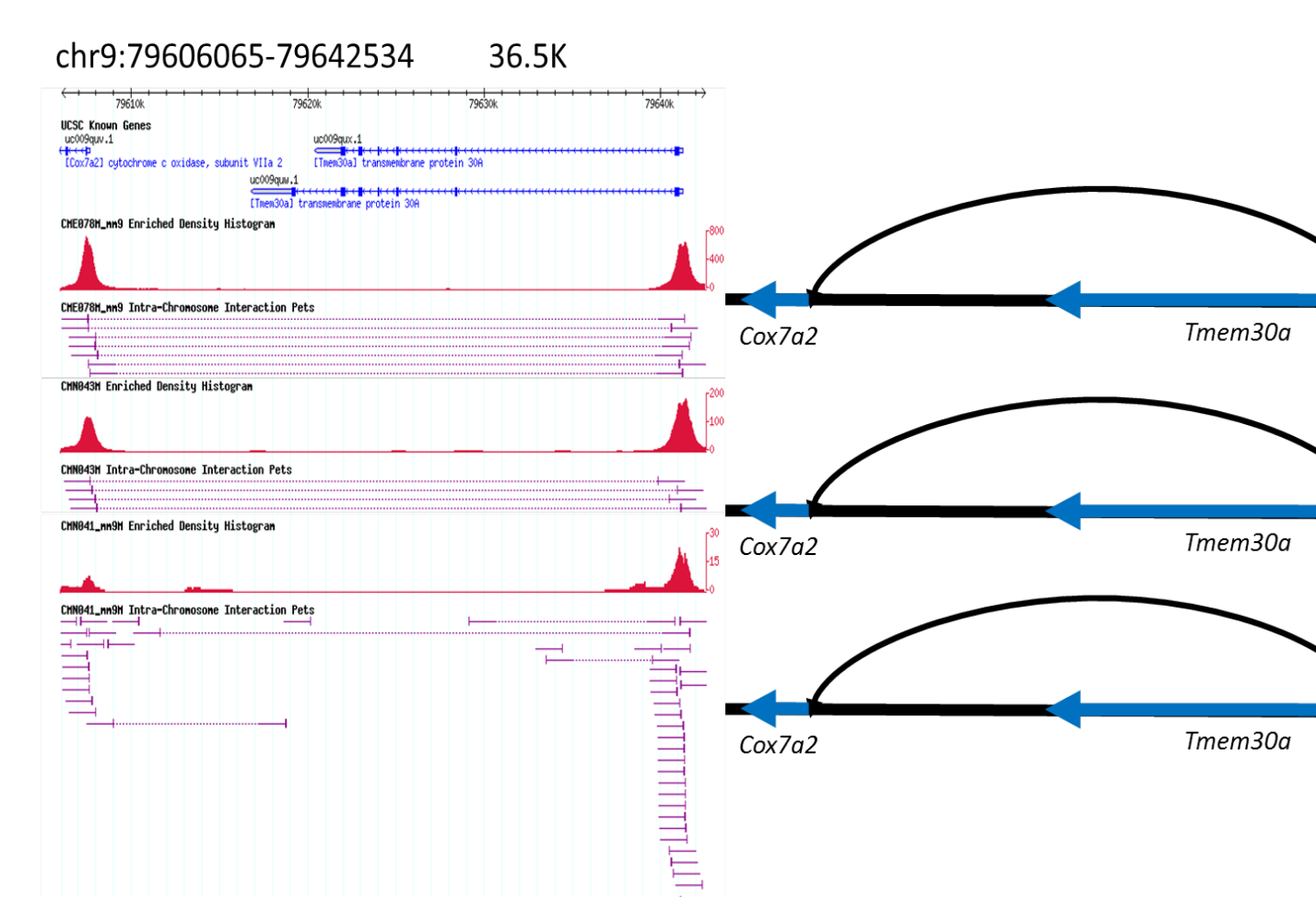


4. Interactions identified by CHIA-PET in mES

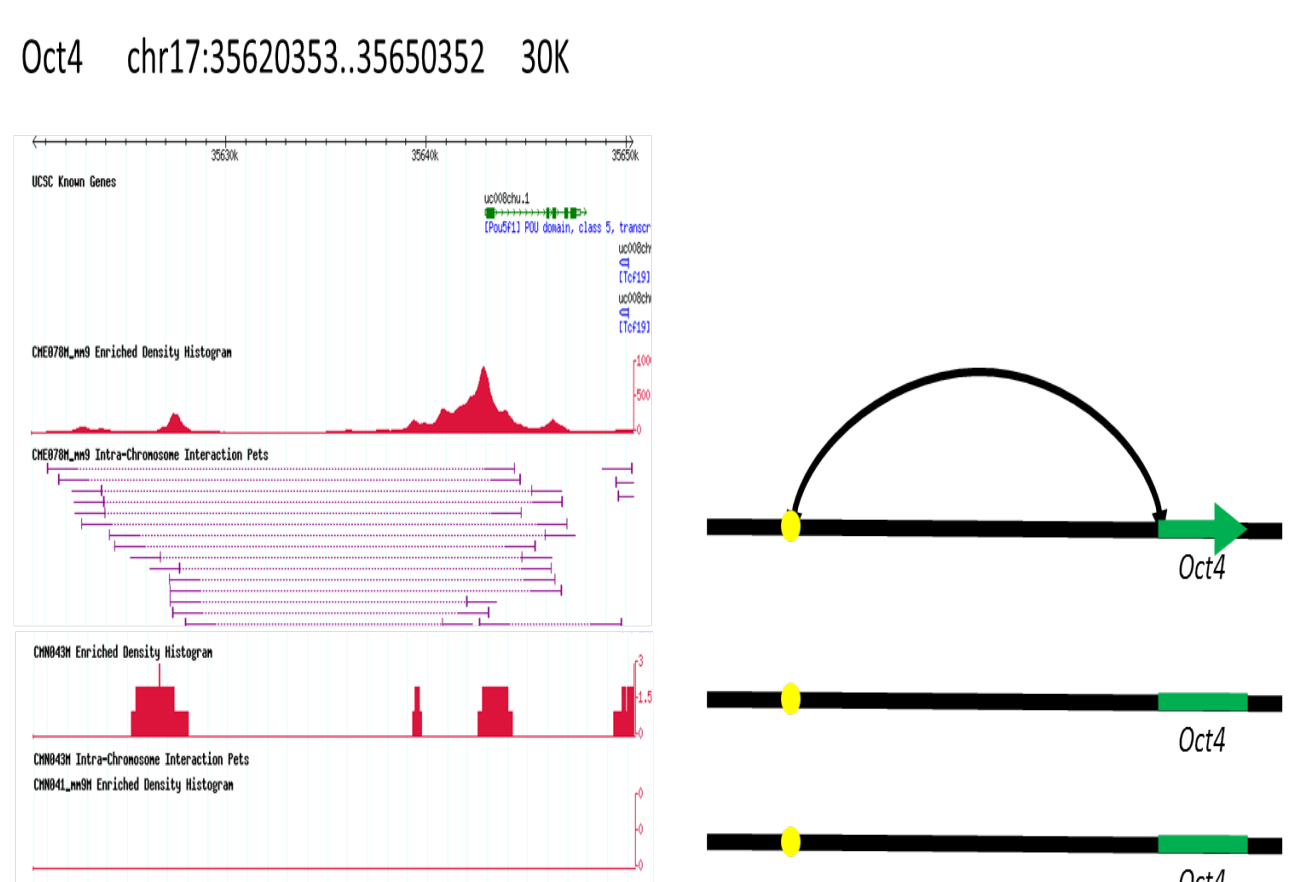


5. Specific Interactions

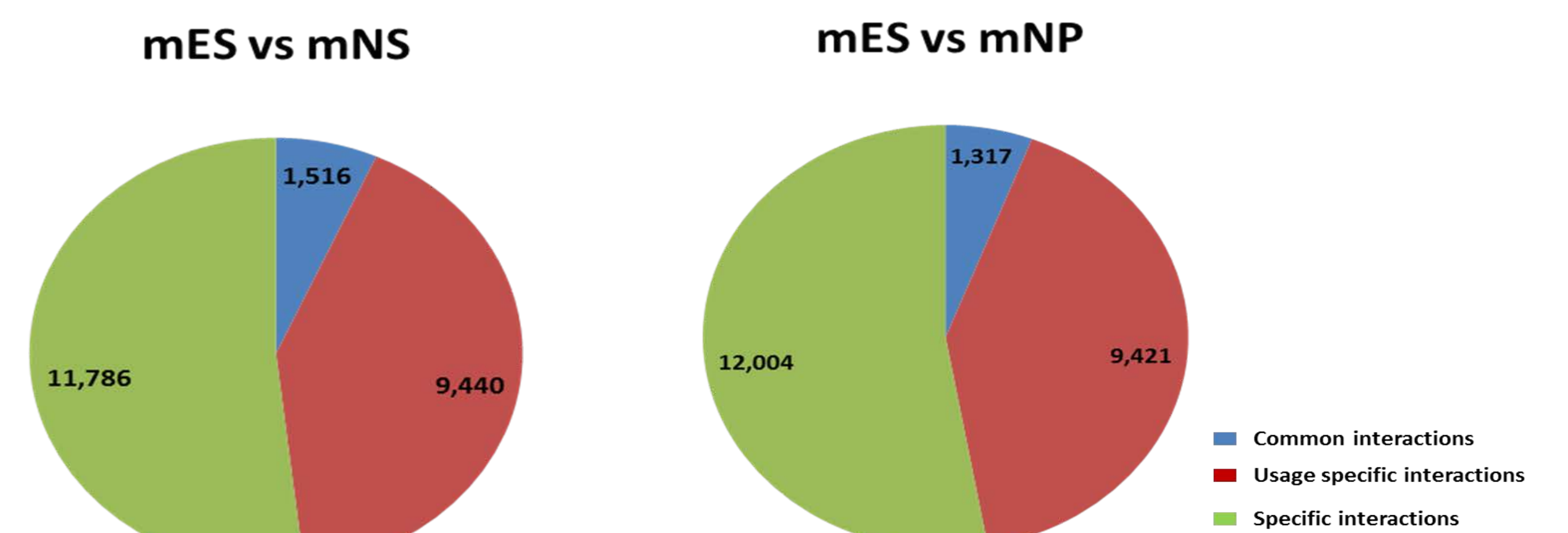
a. Common Interactions identified



b. Tissue specific interactions



6. Dynamic interactome across three cell lines



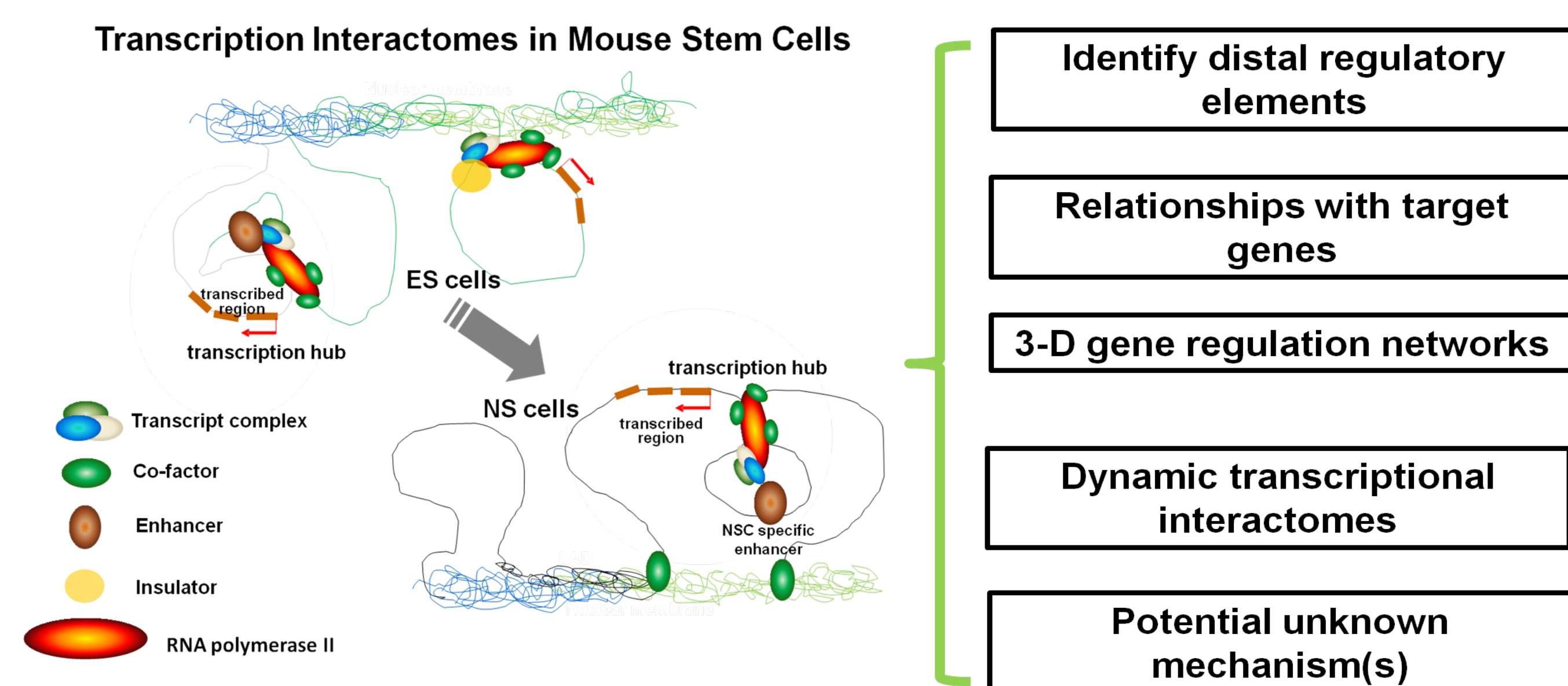
Ongoing works

1. Validation our dataset via various experiments, such as 3C, FISH
2. integrating with other genomic datasets, CHIP-Seq, RNA-Seq, RIP-Seq, methylome
3. Dynamic interactome analysis across the mouse genome
4. Modeling the 3-D gene regulation networks

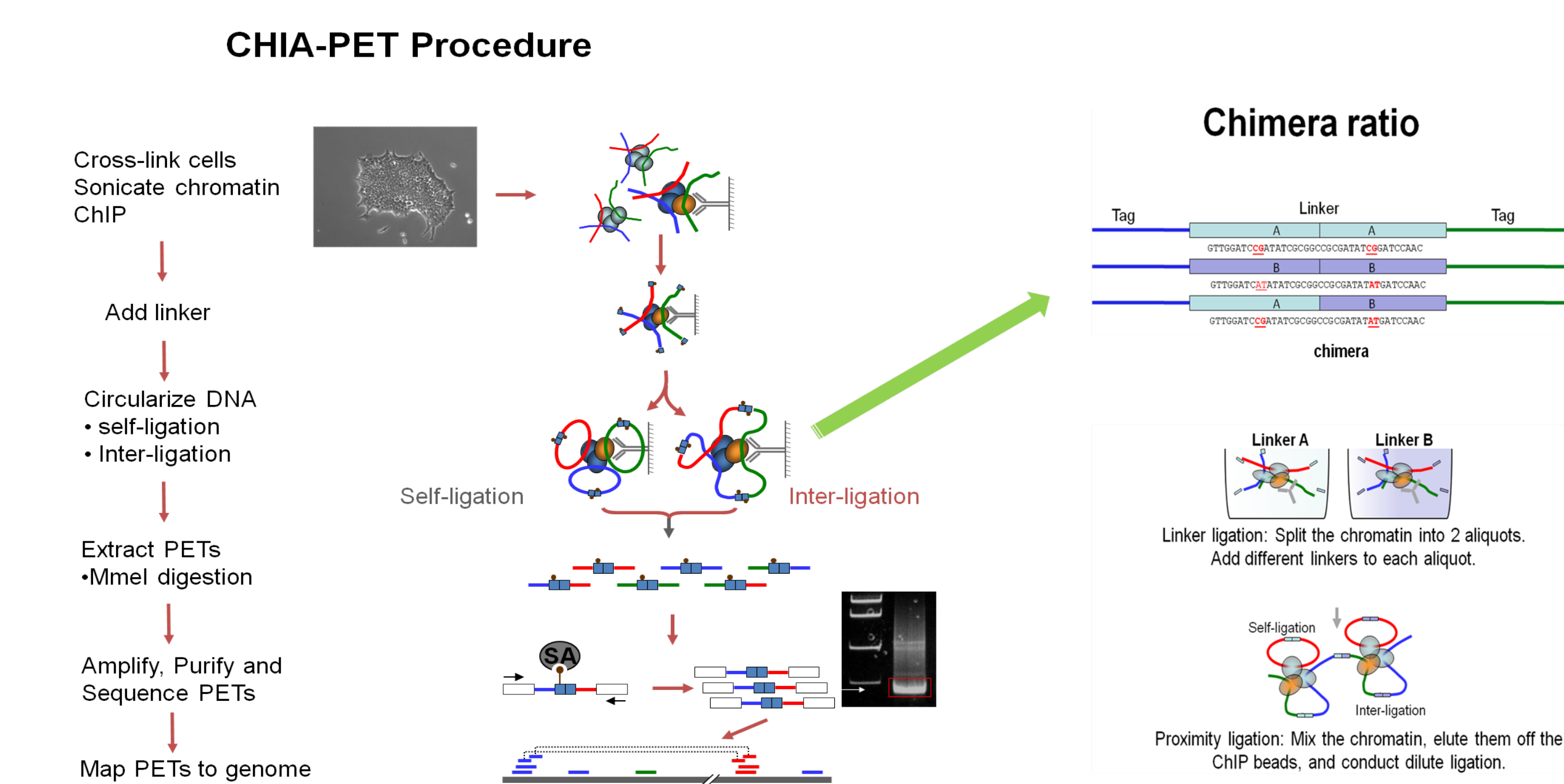
References

- Fullwood. M et al., Nature 462, 58-64, 2009
 Li. G et. al., Genome Biology, 11(2):R22, 2010
 Handoko. L et. al., Nature Genetics 43, 630-638, 2011

I. Project goal



2. approaches used



Result

I. CHIA-PET sequencing and mapping summary

| Library ID | ES_CME078 | NS_CMN043 | NP_CMN041 |
|----------------------------------|---|--|--|
| Total PETs | 160.9M | 152.6M | 166.7M |
| Unique mapped PETs | 94.6M (58.8%) | 72.1M (47.3%) | 79.8M (47.9%) |
| Merged Unique PETs (±2bp) | 66.9M (41.6%) | 38.7M (25.4%) | 8.1M (4.9%) |
| Self-ligation PETs | PETs: 26.9M (40.3%) Binding Sites: 24,201 | PETs: 5.6M (14.3%) Binding Sites: 14,867 | PETs: 721K (8.9%) Binding Sites: 11,819 |
| Intra-chromosomal | PETs: 3.0M (4.5%) Interactions (2+): 72,427 | PETs: 2.1M (5.5%) Interactions (2+): 9,671 | PETs: 765K (9.4%) Interactions (2+): 6,581 |
| Inter-chromosomal | PETs: 36.6M (54.6%) Interactions (2+): 278,656 | PETs: 30.1M (79.7%) Interactions (2+): 59,152 | PETs: 6.5M (79.8%) Interactions (2+): 1,700 |

2. Evaluation noise level via chimera library

