

The JGI Times – Portal 6.0 Released!!

Michael Cantor¹ and Tatyana Smirnova²

¹Lawrence Livermore Lab, ²DOE JGI/LBNL

To whom correspondence may be addressed. E-mail: mncantor@lbl.gov.

March 22, 2011

ACKNOWLEDGMENTS:

The work conducted by the U.S. Department of Energy Joint Genome Institute is supported by the Office of Science of the U.S. Department of Energy under Contract No. DE-AC02-05CH11231.

DISCLAIMER:

[LLNL] This document was prepared as an account of work sponsored by an agency of the United States government. Neither the United States government nor Lawrence Livermore National Security, LLC, nor any of their employees makes any warranty, expressed or implied, or assumes any legal liability or responsibility for the accuracy, completeness, or usefulness of any information, apparatus, product, or process disclosed, or represents that its use would not infringe privately owned rights. Reference herein to any specific commercial product, process, or service by trade name, trademark, manufacturer, or otherwise does not necessarily constitute or imply its endorsement, recommendation, or favoring by the United States government or Lawrence Livermore National Security, LLC. The views and opinions of authors expressed herein do not necessarily state or reflect those of the United States government or Lawrence Livermore National Security, LLC, and shall not be used for advertising or product endorsement purposes.

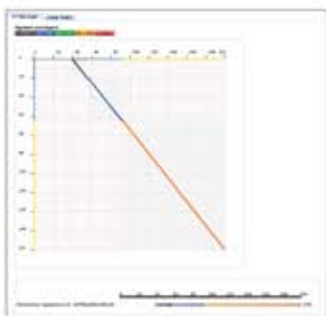
[LBNL] This document was prepared as an account of work sponsored by the United States Government. While this document is believed to contain correct information, neither the United States Government nor any agency thereof, nor The Regents of the University of California, nor any of their employees, makes any warranty, express or implied, or assumes any legal responsibility for the accuracy, completeness, or usefulness of any information, apparatus, product, or process disclosed, or represents that its use would not infringe privately owned rights. Reference herein to any specific commercial product, process, or service by its trade name, trademark, manufacturer, or otherwise, does not necessarily constitute or imply its endorsement, recommendation, or favoring by the United States Government or any agency thereof, or The Regents of the University of California. The views and opinions of authors expressed herein do not necessarily state or reflect those of the United States Government or any agency thereof or The Regents of the University of California.

LLNL-4523E-Poster
LLNL-POST-484182

PORTAL 6.0 RELEASED!!!

Users feeling the BLAST

After 6 months of secret underground tests, the JGI has responded to user demands for a powerful new BLAST tool. BLAST 6.0 allows you to query across multiple organisms, monitor your jobs in real time, and get results at lightning speeds.

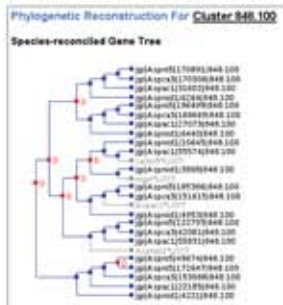


BLAST HIT DETAILS

Plus, you can do more with your hits: get ClustalW alignments, see PFAM domain information, view detailed alignment graphs of your HSPs, and export your results in Excel and FASTA formats.

Your Family Tree

Love the portal Clusters tool for exploring protein families? Then you'll really dig the new Phylogenetic Reconstruction feature that draws a species-reconciled gene tree of your cluster!



PROTEIN FAMILY TREE

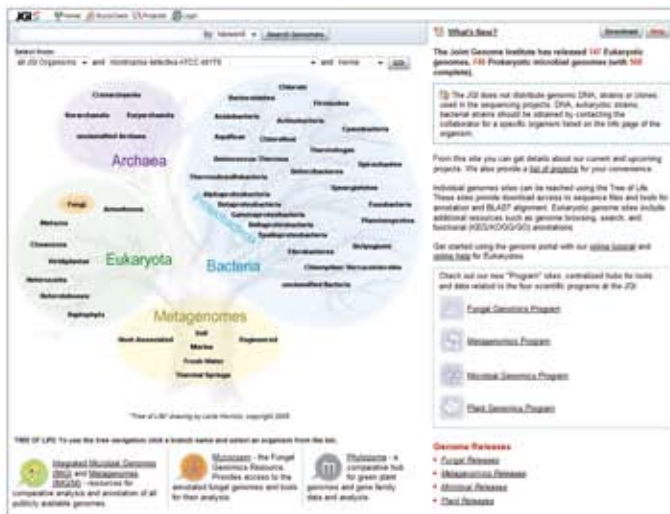
Check out Genome Portal 6.0 here:

genome.jgi-psf.org

New JGI Genome Portal Unveiled

The hotly anticipated new JGI Genome Portal hit the streets on March 13, 2011. Portal 6.0 is packed with features, including new BLAST and gene search tools, tighter integration with VISTA and JGI Program Sites, and an increased emphasis on comparative genomics with genome "Groups".

Microbiologist Mike Cantor, 37, was one of the investigators who camped out at the JGI in anticipation of the release. "What, it's just a web-site? What am I doing here??" he was heard to exclaim when told that the portal is freely available to anyone with a browser.



GENOME PORTAL 6.0

Search is on for Missing Genes

New and improved Gene Search allows you to easily search for proteins and transcripts by keywords, id, and functional classifications such as GO, KEGG, and InterPro domains. Search within a single genome or across a genome "Group". A wealth of information is at your fingertips with each hit, and best of all, with a new indexing engine under the hood, Search is faster than ever.



GENE SEARCH

Portal, VISTA Hold High-Level Talks

In Portal 5.0, the Vista Synteny Viewer, an innovative new browser for whole-genome alignments, made its debut on the Genome Portal. Now, in Portal 6.0, VISTA alignment tools are even more deeply integrated with the portal. From within an organism portal, you can view VISTA alignments using three connected tools: The Synteny Viewer, VistaDot, the dynamic dot plot viewer, and VistaPoint, which drills into an alignment to provide detailed information about High-Scoring Pairs.

MycCosm Reveals a World of Fungi

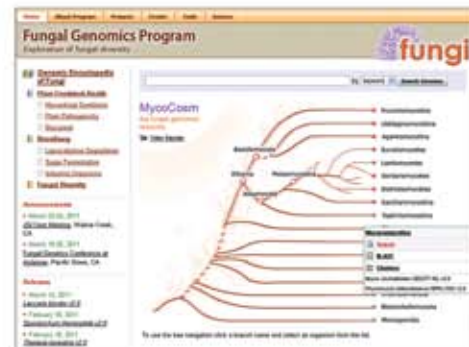
MycCosm, one of four JGI "Program Sites" serves as a central hub for all things fungal. Each node on the MycCosm tree provides fast access to "Group" portals, where you can apply portal tools to all genomes in the corresponding fungal taxa.

The JGI also offers program sites for Plant Genomics, Metagenomics and Microbial Genomics Programs.

It's a "Group" Thing

Given the dramatic scale-up in the number of sequencing projects at the JGI, scientists are shifting their focus from single genomes to comparative genomics. Portal 6.0 introduces the "Group" portal, in which your favorite portal tools can be applied to groups of related genomes.

Portal tools available on Group Portals include BLAST, Gene Search, Clusters, and Download.



MYCOCOSM