

The content in this preview is based on the last saved version of your email - any changes made to your email that have not been saved will not be shown in this preview.

[View as Webpage](#)



FALL 2020

In this Issue: September 1 Community Engagement Webinar! | CSP New Investigator Call | Genome Insider Podcasts: 2 New Episodes | JGI-enabled Science Highlights | FICUS Selections Announced | KBase's New Website



Pro Tips for Successful Proposals

Tuesday, September 1, 9AM – 10AM (PDT)

JGI will host the second installment of the Engagement Webinar Series, "Pro Tips for Successful Community Science Program (CSP) Applications." Join

Interim User Program Deputy and Microbial Program Head **Tanja Woyke** and Project Management Lead **Christa Pennacchio** in a lively conversation with host and Microscale Applications Lead **Rex Malmstrom**.
Register for free here.

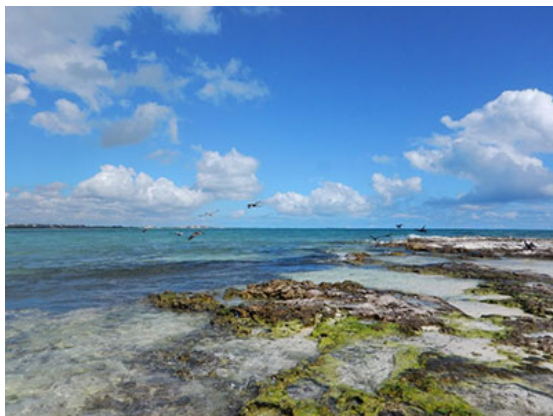


New to JGI? Here's Your Opportunity

If your interest is piqued by the "Pro Tips" webinar, you may be ready for the **CSP New Investigator Call**. Proposals may be submitted at any time as brief white papers and will be reviewed every six months. The next deadline is September 21, 2020. For more information, visit the **User Programs site**.

Find Fresh Voices on Genome Insider

Listen to two new podcast episodes.



Join Alison Takemura and her guests from Penn State University - **Mónica Medina**, Viridiana Avila-Magaña, and Roberto Iglesias-Prieto - to learn how warm waters stress corals and the role their resident microbes play in helping them take the heat, **here**.

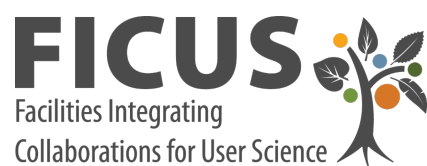


Do you have six minutes for Episode 6? Then listen to how recent CSP New Investigator awardee **Pankaj Trivedi** of Colorado State University is using microbiome science to help make plants more resilient to drought. Find it **here**.

Listen to both shows [here](#) and access the episode transcripts. Video teasers are [here](#).
Send in your ideas for future topics and interviewees [here](#).

Latest JGI-enabled Science

Crop breeders have harnessed polyploidy to increase fruit and flower size, and confer stress tolerance traits. In a *Nature Communications* study, **Pilar Catalan** of the Universidad de Zaragoza and JGI's John Vogel led a team that sheds light on the origins, evolution and development of plant polyploids, via a pan-genomic analysis of the annual grass *Brachypodium hybridum*. [Read more >](#)



Latest FICUS Selections Announced

From characterizing the fate of carbon stored in soil, to analyzing multi-omic data across eco-climate regions, **10 new proposals were selected** for support under the “**Facilities Integrating Collaborations for User Science**” (FICUS) program bringing resources from the JGI, the **Environmental Molecular Sciences Laboratory** and the **National Ecological Observatory Network (NEON)** to complex environmental challenges.



KBase Website Gets Makeover

Check out the new look of **KBase**, accelerating the delivery of the latest software and data science platform designed to meet the grand challenge of systems biology: predicting and designing biological function. While there you may view archived tutorials [here](#). And stay tuned for the upcoming “Viral tools in KBase” webinar on KBase's Apps for viral analysis. The webinar will be held 10AM PDT on Wednesday, September 23.



BERKELEY LAB

